



Questions? Text Us!



COMPLETE MARINE
COMPLETE MARINE 800 South Federal Highway
Pompano Beach, FL, US, 33062
Tel:954-784-9011



2015 Century 2301 Center Console

Pompano Beach, Florida

YEAR	LENGTH	PRICE
2015	23 ft	\$48,800

***** IN CONTRACT !!! PLEASE CALL FOR
BOATS IN STOCK OR INCOMING.

AVAILABILITY OR TO INQUIRE ABOUT OTHER SIMILAR
CALL JOHN KRAFT DIRECTLY !! AT 516*860*4950

2015 CENTURY 2301

POWERED BY A YAMAHA 250 W/ ONLY ~ 521 HOURS, ALL NEWER / BRAND NEW CUSHIONS \$4,000, NEWER SIMRAD 12" go12 ~\$3,700, 2- NEW GEL BATTERIES, HARD TOP, RAY-MARINE -MARINE VHF, NEW RITCHIE COMPAS, FUSION STEREO, FUSION SPEAKERS, HEAD, COURTESY LIGHTS, SPREADER LIGHTS, Lenco TRIM TABS, YAMAHA DIGITAL GAUGES, THIS BOAT IS SUPER CLEAN MECHANICALLY IN GREAT CONDITION JUST HAD FULL SERVICE ~ 30 HOURS AGO (EARLY-AHEAD OF TIME AT 490 HOURS)

This boat is so super clean!! Perfect for restaurant/bar hopping, perfect for sand bar action and perfect for fishing!! Very clean, very presentable condition.

Century's Center Console models are designed with features for tournament and pleasure anglers with plenty of luxury and safety for family enjoyment.

- The flagship of our single-engine fleet, the 2301 CC offers big water capabilities and Yamaha power to get you where you need to be.

- Onboard features include tackle station, leaning post and wrap-around bow seating.

- Additional features include port and starboard rod boxes, removable tilt-out tackle box and two 184-quart fish boxes.

** stk#521 ** This boat is located at our marina in our yard.

** Trailers are available but sold & priced seperately. We have both new and preowned.

SPECIFICATIONS

Year Built	2015	Category	Power	Length Overall	23 ft
Beam	8'6 ft	Construction	Fiberglass	Hull ID	AAC23022G415
Deadrise Angle	20 °	Min Draft	1'4 ft	Engines	1
Total Engine Power	250 hp	Fuel Tanks	1	Fuel Tank Cap.	130 gal
Water Tanks	1	Water Tank Cap.	7 gal	Dry Weight	4,150 lb
Bridge Clearance	8'5 ft				

ENGINE 1 SPECIFICATIONS

Make:	YAMAHA	Model:	250	Fuel:	Unleaded
Engine Power:	250hp	Type:	Outboard	Propeller Type:	3 Blade, Stainless Steel
Year:	2015	Engine Hours:	521		

MEDIA GALLERY



completeboat@aol.com • www.completeboat.com
NEW • USED • BROKERAGE • PARTS • SERVICE

Authorized Dealer For

MERCURY
BOATS

YAMAHA

SUZUKI
MARINE

NauticStar
BOATS

Piranha
Boatworks

KenCraft

MERCURY
MerCruiser

VOLVO PENTA
GASOLINE & DIESEL

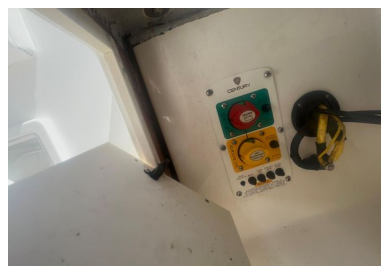
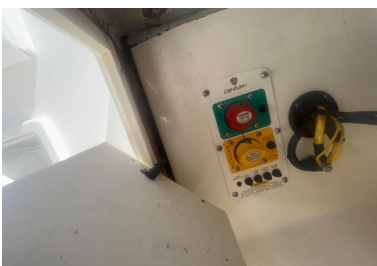
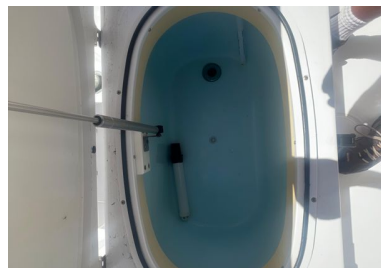
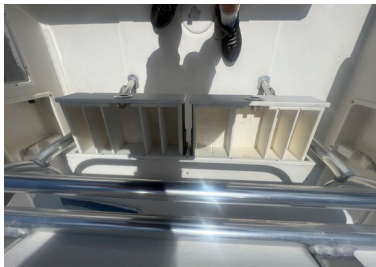
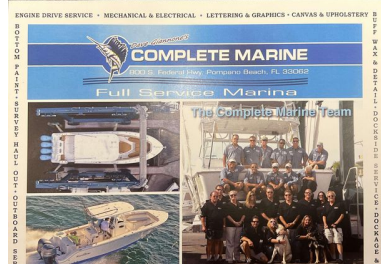
"From Bottoms to Repower. We Do It All"

We Buy & Sell Boats !!!

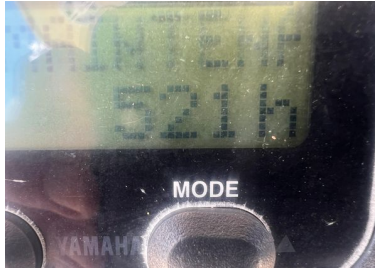
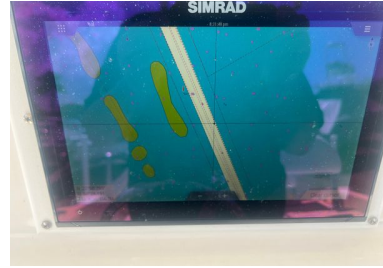
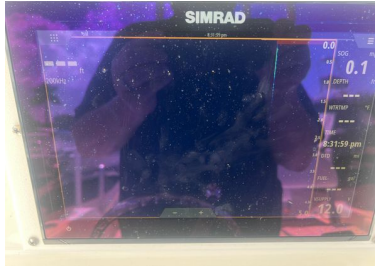
Consignment and Brokerage boats needed!!
Want to sell your boat? Or looking for a boat? Call the Complete Marine sales team today!

954-567-BOAT

1/2 DOCK - REC90 & DIESEL • PRE PURCHASE INSPECTION • FULLY STOCKED PARTS DE









Standard Features

- Anchor- Roller/Chute
- Baitwell – Aerated with Power Stream® Venturi Aerator
- Bow Bolster and Bow Cushion
- Bow Rail – Split
- Cleats – Pull Up
- Compass – Ritchie
- Electric – Dual Battery Backup System (Panel w/ VSR, Trays and Wiring)
- Electric – Battery Charger 2 Bank with inlet (Single Engine)
- Freshwater – Shower at Transom
- Gauges – Yamaha
- Head – Porta Potty Pump Out with Deck Fitting
- Hinges – Friction Hinges
- Hull Color – White
- Ladder
- Powder Coat
- Rod Boxes/Storage
- Rod Holder/Cup Holder

- Seating – Aluminum Lean Post, with Backrest, Tackle Drawers and Cooler
- Seating – Rear
- Shipping – Covers or Shrink Wrap
- Steering – Hydraulic/Tilt
- Stereo- 4 speakers
- Tackle Box
- Top – Fiberglass Hard Top with Spreader Lights and Rod Holders
- Trim Tabs with Lighted Indicator
- Wash Down (raw-water)

Disclaimer

The Company offers the details of this vessel in good faith but cannot guarantee or warrant the accuracy of this information nor warrant the condition of the vessel. A buyer should instruct his agents, or his surveyors, to investigate such details as the buyer desires validated. This vessel is offered subject to prior sale, price change, or withdrawal without notice.

**** FOR AN INSTANT CALL BACK CALL/TEXT JOHN KRAFT 516-860-4950**

**** Sales people, Marina, staff, not responsible for any miss information or typos. Please confirm everything.**

© 2024 Boats Group