



Questions? Text Us!



COMPLETE MARINE
COMPLETE MARINE 800 South Federal Highway
Pompano Beach, FL, US, 33062
Tel:954-784-9011



2020 NauticStar 2102 Legacy

POMPANO BEACH, Florida

YEAR	LENGTH	PRICE
2020	21 ft	\$49,900

*** SOLD IN LESS THAN 12 HOURS!!!

***** LIST YOUR BOAT WITH JOHN KRAFT.

AT COMPLETE MARINE.

WE GET RESULTS AND WE GET THEM FAST !!

*** THIS BOAT SOLD IN LESS THAN 12 HOURS UPON LISTING. I AM LEAVING AD UP TO
BUILD A CLIENT WAITING LIST THIS WAY WHEN A SIMILAR BOAT, YEAR, MAKE, MODEL, CONDITION & PRICE COMES IN I
WILL THEN REACH OUT TO PEOPLE ON MY LIST. WHICH IS WHY I
HAVE BOATS SOLD IN ~ 48 HOURS OR LESS!!!

ALSO AS A SAMPLE AD TO SOLICIT OTHERS THINKING OF LISTING
ON CONSIGNMENT

2020 NAUTICSTAR 2102 LEGACY Powered by a Yamaha 150 w/ ONLY ~68 HOURS !!!

***** FACTORY WARRANTY UNTIL 1/18/2025 !!! (TRANSFERABLE)

Also features Simrad 9go-pro, ritchie compas, Porta-potti area, fresh water washdown, Bimini Top, Infinity stereo,

The interior is in mint condition as it was kept in a garage and this boat has never been bottom painted and taken care of perfectly!

SELLER IS MOTIVATED FOR A QUICK SALE SO BRING ALL OFFERS !!

NauticStar 2102 will create a legacy of memories with family and friends. With comfort features such as an integrated aft bench seat, walkthrough transom door, storage, insulated drink cooler, and cast net storage, the 2102 Legacy is fully equipped for a family day of pleasure boating and fishing fun. The 2102 also offers two livewell/baitwells and full bow cushioning for comfort.

** trailers are priced and sold separately. We have both used and new as well. We are a full service marina.

SPECIFICATIONS

Year Built	2020	Category	Power	Length Overall	21 ft
Beam	8'6 ft	Number of Passengers	8	Construction	Fiberglass
Hull ID	JNT31701H920	Deadrise Angle	19 °	Min Draft	1'1 ft
Engines	1	Total Engine Power	150 hp	Fuel Tanks	1
Fuel Tank Cap.	69 gal	Dry Weight	2,200 lb	Bridge Clearance	7'10 ft

ENGINE 1 SPECIFICATIONS

Make:	YAMAHA	Model:	F150XB	Fuel:	Unleaded
Engine Power:	150hp	Type:	Outboard	Year:	2020
Engine Hours:	68				

MEDIA GALLERY



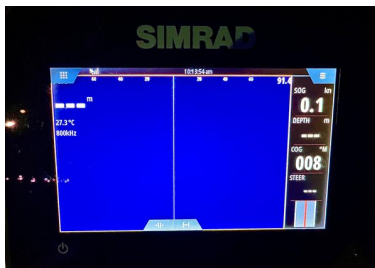
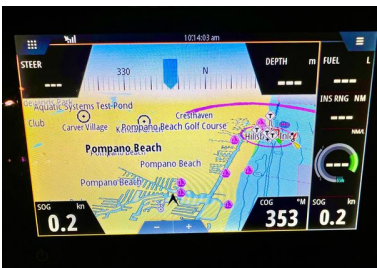
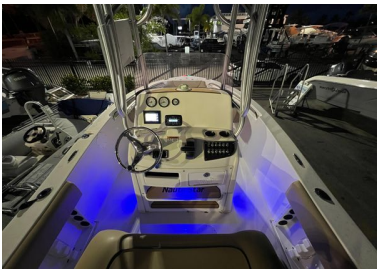
Year	Make	Model	Material	Color	Canvas	Engine	Deck	Planes																												
2014	NauticStar	150	White	White	White	150	White	White																												
Detailed History <table border="1"> <thead> <tr> <th>Primary ID</th> <th>Type</th> <th>Category #</th> <th>Description</th> <th>Est. Date</th> <th>Status</th> <th>Notes #</th> </tr> </thead> <tbody> <tr> <td>1</td> <td>Primary</td> <td>1</td> <td>2014 NauticStar 150</td> <td>1/1/14</td> <td>Active</td> <td>1</td> </tr> <tr> <td>2</td> <td>Secondary</td> <td>2</td> <td>2014 NauticStar 150</td> <td>1/1/14</td> <td>Active</td> <td>2</td> </tr> <tr> <td>3</td> <td>Extended</td> <td>3</td> <td>2014 NauticStar 150</td> <td>1/1/14</td> <td>Active</td> <td>3</td> </tr> </tbody> </table>									Primary ID	Type	Category #	Description	Est. Date	Status	Notes #	1	Primary	1	2014 NauticStar 150	1/1/14	Active	1	2	Secondary	2	2014 NauticStar 150	1/1/14	Active	2	3	Extended	3	2014 NauticStar 150	1/1/14	Active	3
Primary ID	Type	Category #	Description	Est. Date	Status	Notes #																														
1	Primary	1	2014 NauticStar 150	1/1/14	Active	1																														
2	Secondary	2	2014 NauticStar 150	1/1/14	Active	2																														
3	Extended	3	2014 NauticStar 150	1/1/14	Active	3																														

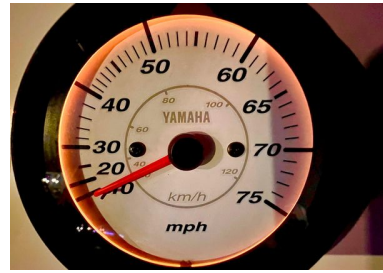
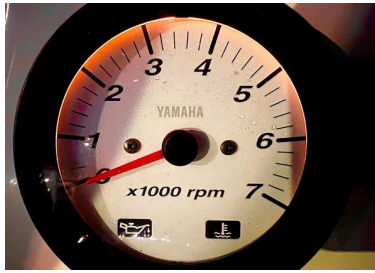
COMPLETE MARINE
 Sales Service Repairs Parts Fuel Dock
 114 S. 1st St. Suite 100
 Fort Lauderdale, FL 33301
 Phone: 954-561-1111
 Fax: 954-561-1112
 Email: info@completeboat.com
 www.completeboat.com













Construction

- Wood Free Construction
- Limited Lifetime Hull Warranty
- Vinyl Ester Barrier Coat
- One-piece Molded Foam Filled Fiberglass Stringer System
- Self Bailing Cockpit w/ Stainless Steel Drains
- RTM Fiberglass Lids
- Teleflex BayStar Pro Hydraulic Steering

516-860-4950
4-784-1116
completeboatfl.com

800 S Federal Ave.
Pompano Beach, FL
Office 954-567-BOAT

www.completeboat.com

- Teleflex Extreme or Yamaha Control Cables
- Fuel Water Separator (Standard on Yamaha motors)
- Control Box Pre-Rig (standard on all boat/motor packages)
- Molded Anchor Storage w/ Anchor
- Dual Insulated Fish Boxes w/ Overboard Drain
- Raw Water, High Pressure Wash Down
- Raw Water Transom Shower
- Syntec Vinyl w/ Nano-Block Stain Protection
- Transshield® Shipping Wrap
- Chrome 3D NauticStar Logo

Hardware

- Stainless Steel Latches
- Recessed Stainless Steel Bow Rails
- Stainless Steel Rub Rail
- Stainless Steel Thru Hull Fittings
- Stainless Steel Drink Holders – 6
- Stainless Steel Gunnel Rod Holders - 4
- Horizontal Gunnel Rod Holders – 3 Ea./Side
- Stainless Steel Pull Up Cleats - 4
- Brass Splashwell Drains
- Brass Shut Off Ball Valves
- Stainless Steel 3-Step Ladder - Aft Starboard Side
- Stainless Steel Floor Drains

Console

- Curved Windshield
- SeaDek® on Console Top
- Custom Stainless Steel Wheel w/ Power Knob
- Helm Station with Area for 2 Large Chart Plotters
- In-Console Cooler (Livewell Option) - 15 Gal.
- Kick Panel w/ Foot Pad
- Flush-Mount Compass
- Infinity® Stereo w/ Bluetooth, Preset Capability & 4 Speakers
- Horn w/ Stainless Steel Grill
- 12 Volt Acc. Plug
- Standard Leaning Post w/ Cushion and 94 Qt. Igloo® Cooler
- LED Navigation and Courtesy Lights

Electrical

- Circuit Breaker Protection
- Stainless Steel Toggle Switches
- Battery Shut Off Switch
- Deutsch Electrical Connectors
- Speedometer, Tachometer, and Fuel Gauges
- Auto Bilge Pump – 750 GPH
- Bilge Pump – 800 GPH

CONTACT INFORMATION

***For a real quick call back please call/text
directly at 516-860-4950 text is best !!!***

JOHN KRAFT

TO SEE MORE BOATS VISIT **WWW.COMPLETEBOAT.COM**

IF YOUR **LOOKING TO SELL OR TRADE YOUR BOAT** CALL US TODAY !

WE ACCEPT ALL TRADES AND WE BUY BOATS ! WE OFFER **FINANCING** AND SHIPPING

Complete Marine located in Pompano Beach FL is a full service waterfront facility offering New and Preowned boats, brokerage, service, storage, fuel, financing and insurance. "If we don't have it in stock, We will find it." Our service department is staffed with certified technicians and we have a 50 ton travel lift, forklifts and offering dockside service makes no job to big or to small. We specialize in all areas of service from diesel, gas engines to AC-Refrigeration. "From bottoms to repower. We do it all"

Disclaimer

The Company offers the details of this vessel in good faith but cannot guarantee or warrant the accuracy of this information nor warrant the condition of the vessel. A buyer should instruct his agents, or his surveyors, to investigate such details as the buyer desires validated. This vessel is offered subject to prior sale, price change, or withdrawal without notice.

© 2024 Boats Group