



Questions? Text Us!



COMPLETE MARINE  
COMPLETE MARINE 800 South Federal Highway  
Pompano Beach, FL, US, 33062  
Tel:954-784-9011



## 2024 NauticStar 252 Legacy

Pompano Beach, Florida

| YEAR | LENGTH |
|------|--------|
| 2024 | 25 ft  |

### AVAILABLE MOTOR PACKAGES

Twin - Yamaha F150XB OR TwinYamaha F200XB

**\*\* YOU CAN CUSTOM BUILD TO YOUR SPECS.**

There is nothing you can't accomplish in a 252 Legacy. Its deluxe leaning post includes a built-in 21-gallon baitwell and prep station for pro-style fishability. It also holds tackle storage drawers and a freshwater washdown. Captain's seating comes with flip-up bolsters, an armrest and a footrest. The whole family can cruise comfortably on the 252, too. The roomy cockpit features plush U-shaped seating and flip-out backrests in the bow. Table and filler options transition the space to a sunpad or picnic area. Three-across seating at aft houses an 18-gallon cooler and an oversized insulated 50-gallon fish box. A walkthrough transom door makes way to a swim platform with a retractable ladder. Whether hauling in a prize lunger or cruising around with family and friends, good times on the 252 Legacy will go on forever.

**DON'T FORGET NAUTICSTAR'S LIFETIME HULL WARRANTY**

### AVAILABLE MOTOR PACKAGES

- Yamaha F150XB – Twin
- Yamaha F200XB – Twin

### OPTIONS

### SEATING

- Premium Liebroc Helm Seat Upgrade with Flip-up Bolster and Folding Armrest

HELM AND ELECTRONICS

- Simrad® Go7 7" Touchscreen Fishfinder/Chartplotter with B60 20° transducer
- Simrad® Go9 9" Touchscreen Fishfinder/Chartplotter with B60 20° transducer
- Simrad® Go12 XSE 12" Touchscreen Fishfinder/Chartplotter with SS60 20° transducer
- Simrad® NSS12 EVO3 12" Touchscreen Fishfinder/Chartplotter with B60 20° transducer
- Dual Simrad® NSS12 EVO3 12" Touchscreen Fishfinder/Chartplotter with B60 20° transducer
- Simrad® StructureScan (Avail. with NSS Units Only)
- Blackout Dash Package NSS12 (Single)\*
- Blackout Dash Package NSS12 (Dual)\*

ACCESSORIES

- Anchor – Windlass
- Overboard Waste Discharge
- Port-A-Pottie – Ceramic Gravity Flush Toilet
- Table Kit

TOWERS AND CANVAS

- Fiberglass T-Top Two-Tone

\*\* FOR MORE INFORMATION CALL JOHN KRAFT FROM COMPLETE MARINE DIRECTLY AT 516\*860\*4950

SPECIFICATIONS

|            |            |                      |        |                |            |
|------------|------------|----------------------|--------|----------------|------------|
| Year Built | 2024       | Category             | Power  | Length Overall | 25 ft      |
| Beam       | 8'6 ft     | Number of Passengers | 12     | Construction   | Fiberglass |
| Hull ID    | NAUTICSTAR | Deadrise Angle       | 20 °   | Min Draft      | 1'3 ft     |
| Engines    | 2          | Fuel Tanks           | 1      | Fuel Tank Cap. | 139 gal    |
| Dry Weight | 4,000 lb   | Bridge Clearance     | 8'2 ft |                |            |

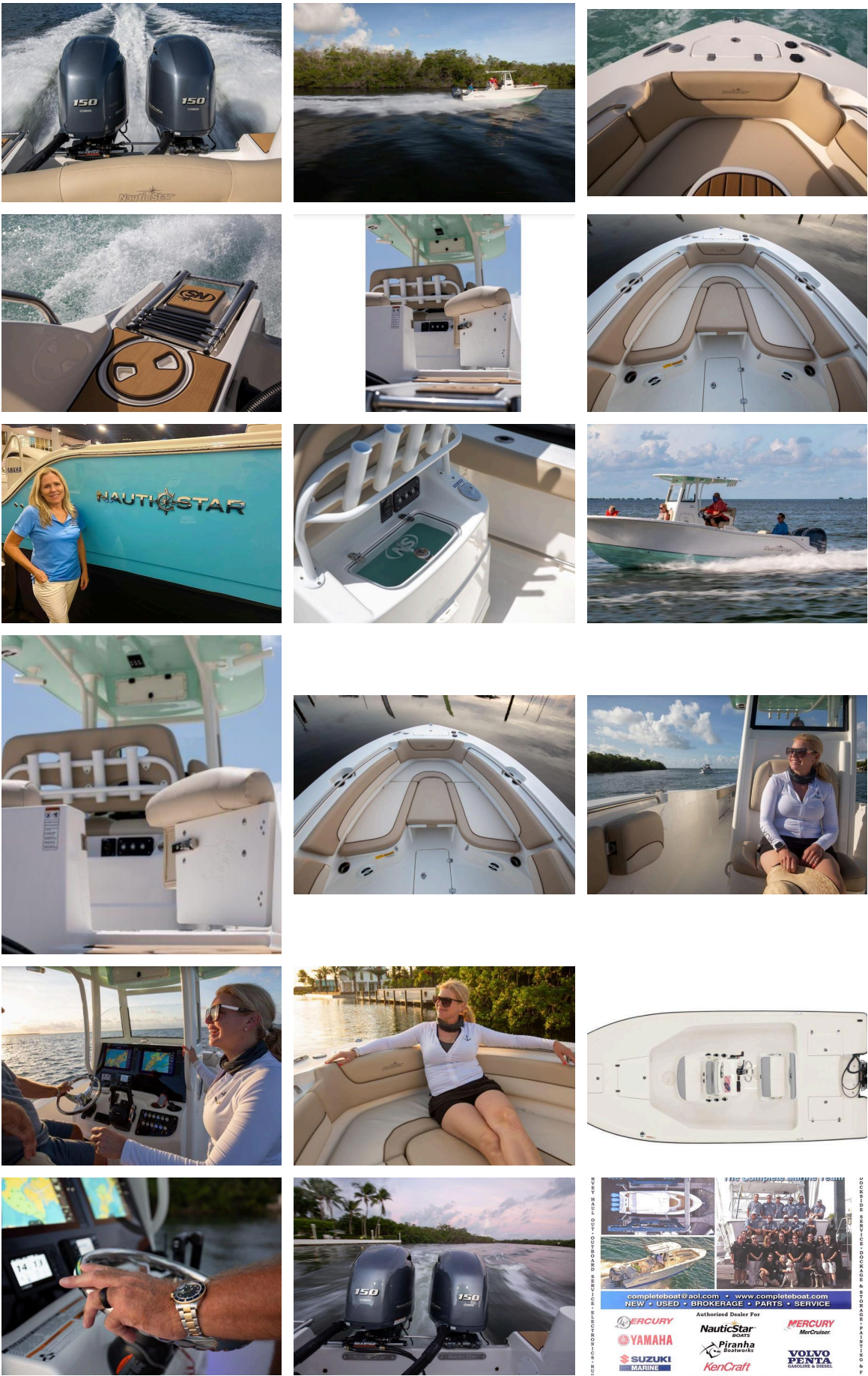
ENGINE 1 SPECIFICATIONS

|               |          |       |          |       |      |
|---------------|----------|-------|----------|-------|------|
| Fuel:         | Unleaded | Type: | Outboard | Year: | 2024 |
| Engine Hours: | 1        |       |          |       |      |

ENGINE 2 SPECIFICATIONS

|               |          |       |          |       |      |
|---------------|----------|-------|----------|-------|------|
| Fuel:         | Unleaded | Type: | Outboard | Year: | 2024 |
| Engine Hours: | 1        |       |          |       |      |

MEDIA GALLERY







#### Construction

- Wood-Free, Composite Construction
- Limited Lifetime Hull Warranty
- Vinyl Ester Barrier Coat
- Fiberglass Stringer System

- Self-Bailing Cockpit w/ Molded Non Skid
- RTM Fiberglass Lids
- Teleflex SeaStar Pro Hydraulic Steering w/ Tilt
- Teleflex Extreme or Yamaha Control Cables
- Molded Anchor Storage w/ Anchor
- Dual Insulated Fish Boxes Fwd w/ Overboard Drain — 25 gal./side
- Dual Raw Water High Pressure Wash Down
- Aft Port Baitwell — 30 gal.
- Bow In-Floor Drop-In Tub/Storage
- Raw Water Transom Shower
- Syntec Vinyl w/ Nano-Block Stain Protection
- Standard Pressurized Freshwater System
- Transhield® Shipping Wrap
- Chrome 3D NauticStar Logo

**Hardware**

- Stainless Steel Latches
- Recessed Stainless Steel Bow Rails
- Stainless Steel Rub Rail
- Stainless Steel Thru Hull Fittings
- Stainless Steel Drink Holders - 10
- Stainless Steel Rod Holders - 4
- Horizontal Gunnel Rod Holders – 3 Ea./Side
- Stainless Steel Pull-up Cleats - 6
- Brass Shut Off Ball Valves
- Stainless Steel 3-Step Ladder - Aft Starboard Side
- Stainless Steel Floor Drains

**Head Console**

- Fully Fiberglass Lined Interior with sink, mirror, and SeaDek® Flooring
- Integrated Powder Coated Fiberglass T-Top (Black or White)
- Side Port/Window In-Console
- Curved Windshield
- SeaDek® on Console Top
- Custom Stainless Steel Wheel w/ Power Knob
- Stainless Steel Drink Holders - 2
- Flush-Mount Compass
- Kick Panel w/ Foot Pad
- Horn w/ Stainless Steel Grill
- 12 Volt Acc. Plug
- Newly designed leaning post w/ ergonomically correct seating with flip-up bolsters, larger baitwell w/ lid, switch panel, and conveniently located freshwater washdown (12 Gal.)
- Leaning Post 2-Drawer Tackle Storage
- Cockpit Bolster Pads
- Infinity® Stereo w/ Bluetooth, Preset Capability & 4 Speakers
- LED Navigation and Courtesy Lights

**Electrical**

- Batteries & Battery Switches Located in Leaning Post
- Circuit Breaker Protection
- Stainless Steel Toggle Switches
- Battery Shut Off Switch Located in Leaning Post
- Deutsch Electrical Connectors
- Yamaha 6YC Digital Gauge
- Auto Bilge Pump – 750 GPH
- Bilge Pump – 800 GPH
- Lenco Trim Tabs w/ LED Indicator Switch

**CONTACT INFORMATION**

The Company offers the details of this vessel in good faith but cannot guarantee or warrant the accuracy of this information nor warrant the condition of the vessel. A buyer should instruct his agents, or his surveyors, to investigate such details as the buyer desires validated. This vessel is offered subject to prior sale, price change, or withdrawal without notice.

**\*\* FOR AN INSTANT CALL BACK CALL/TEXT JOHN KRAFT 516-860-4950**

