




COMPLETE MARINE  
COMPLETE MARINE  
Pompano Beach, FL, US, 33062  
Tel:954-567-2628



## 2002 Intrepid 377 Walkaround

 Pompano Beach, Florida

YEAR	LENGTH	PRICE
<b>2002</b>	<b>37 ft</b>	<b>\$179,900</b>

2002 Intrepid 377 Walk Around with the much desired KEVLAR HULL powered by Triple Suzuki 2007 DF300hp with less than 445 very well maintained hours. All service records were meticulously kept and available. Also features JL audio sound system, 2- TV, Ritchie compass, Garmin GPS map 7607XSV, Simrad, Standard Horizon VHF radio. All covers for deck and cockpit seating custom made specifically for this boat using the best quality material. In the cabin area it boasts a full galley with sink, refrigerator, ice maker, microwave, stove top. The whole interior is immaculate condition on a scale of 1-10 easily a 9.5! The head is as big as a Manhattan apartment w/ 6'7" head clearance full size shower.

\*\*\* UPDATE: 1/27/2025

Just BOTTOM PAINTED

The 2002 Intrepid 377 Walk Around is a well-regarded offshore fishing and cruising boat that features a deep-V hull for smooth handling in rough waters, making it great for both sport fishing and leisurely trips. It's known for its solid construction and performance. Here are some key features of the 2002 Intrepid 377 Walk Around:

- Length Overall (LOA): 37 feet 7 inches
- Beam: 10 feet 10 inches
- Draft: 2 feet 7 inches
- Weight: Around 13,500 lbs (dry weight)
- Fuel Capacity: Approximately 350 gallons
- Water Capacity: Around 40 gallons
- Power: Typically powered by twin or triple outboard engines, with common configurations being 250-350 hp per engine.

### Key Features:

- Walk-around design allows for easy access to the bow from the cockpit.
- Large cockpit for fishing with ample storage.
- Well-equipped helm with ample electronics space, and often comes with a hardtop for protection from the sun.
- Cabin space with a forward berth and a small galley and head (bathroom), suitable for overnight stays.
- Fishing features like rod holders, live wells, and fish boxes.

The Intrepid 377 Walk Around is appreciated for its durability, ride quality, and layout that combines both comfort and functionality, making it a versatile choice for serious anglers and boaters. It is a bit of a "go-anywhere" type of boat.

### Summary of Key Performance Metrics:

- Top Speed: 45-50 mph (with twin engines), 55 mph+ (with triple engines)
- Cruising Speed:
- 35-42 mph (26-30 knots)
- Fuel Economy: Around 1.5-2 miles per gallon at cruising speed, less at top speed.

- Range: 350-500 miles, depending on cruising speed and conditions.
- Handling: Excellent offshore performance with a deep-V hull and wide beam. Stable and dry ride even in rough waters.

Pricing:

The price of a used 2002 Intrepid 370 can vary significantly based on its condition, engine configuration, and included equipment. Typically, prices might range from \$100,000 with twin motors to \$196,000 with triple Suzuki DF300 hp

SPECIFICATIONS

Year Built	2002	Category	Power	Length Overall	40 ft
Beam	10'10 ft	Construction	Other	Hull ID	iBW37060L102
Engines	3	Total Engine Power	900 hp	Cruising Speed	42 mph
Maximum Speed	50 mph	Fuel Tank Cap.	350 gal	Water Tank Cap.	40 gal
Water Heater Cap.	0 gal	Holding Tank Cap.	0 gal		

ENGINE 1 SPECIFICATIONS

Make:	SUZUKI	Model:	DF300	Fuel:	Unleaded
Engine Power:	300hp	Type:	Outboard	Year:	2007
Engine Hours:	435				

ENGINE 2 SPECIFICATIONS

Make:	SUZUKI	Model:	DF300	Fuel:	Unleaded
Engine Power:	300hp	Type:	Outboard	Year:	2007
Engine Hours:	435				

ENGINE 3 SPECIFICATIONS

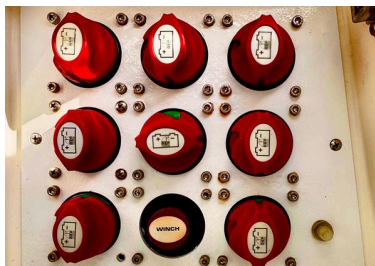
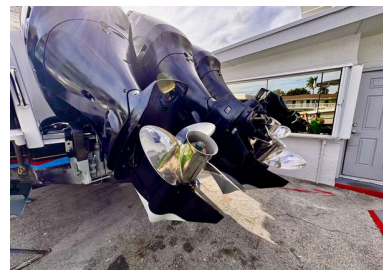
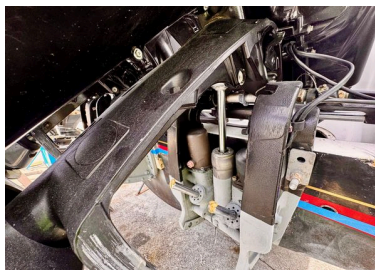
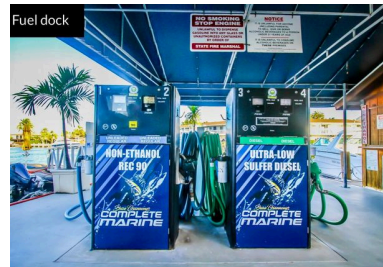
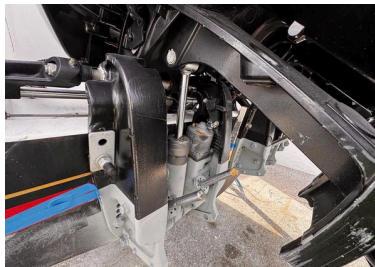
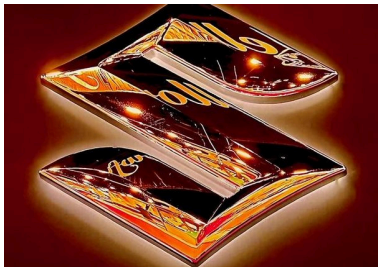
Make:	SUZUKI	Model:	DF300	Fuel:	Unleaded
Engine Power:	300hp	Type:	Outboard	Year:	2007
Engine Hours:	435				



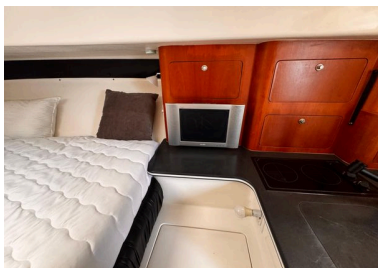
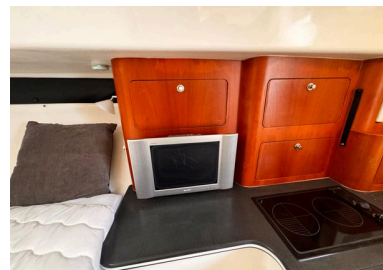
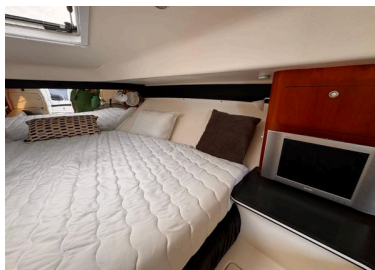
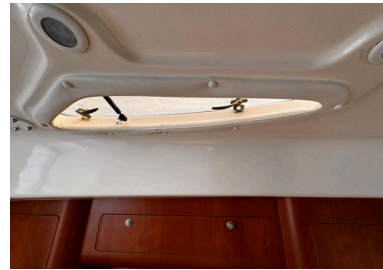
# MEDIA GALLERY



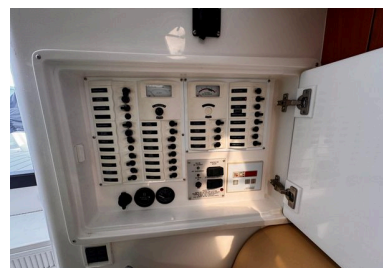
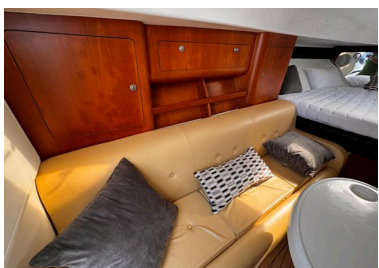
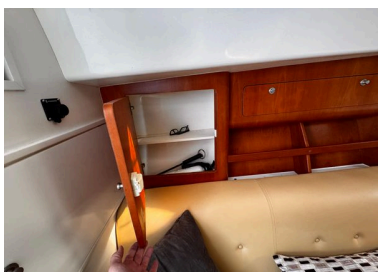
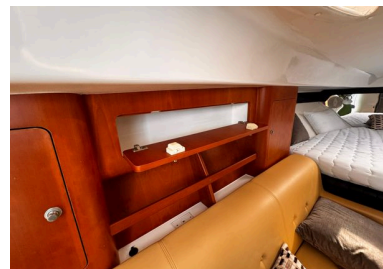
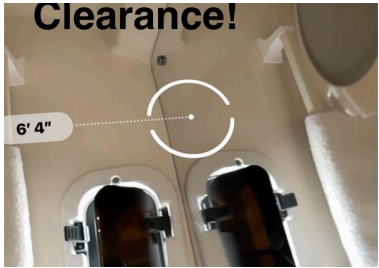




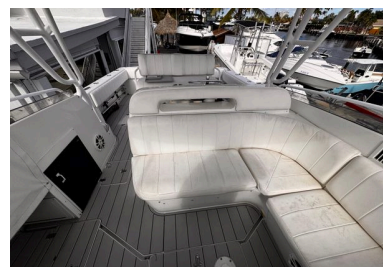
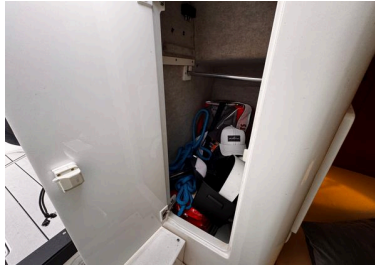




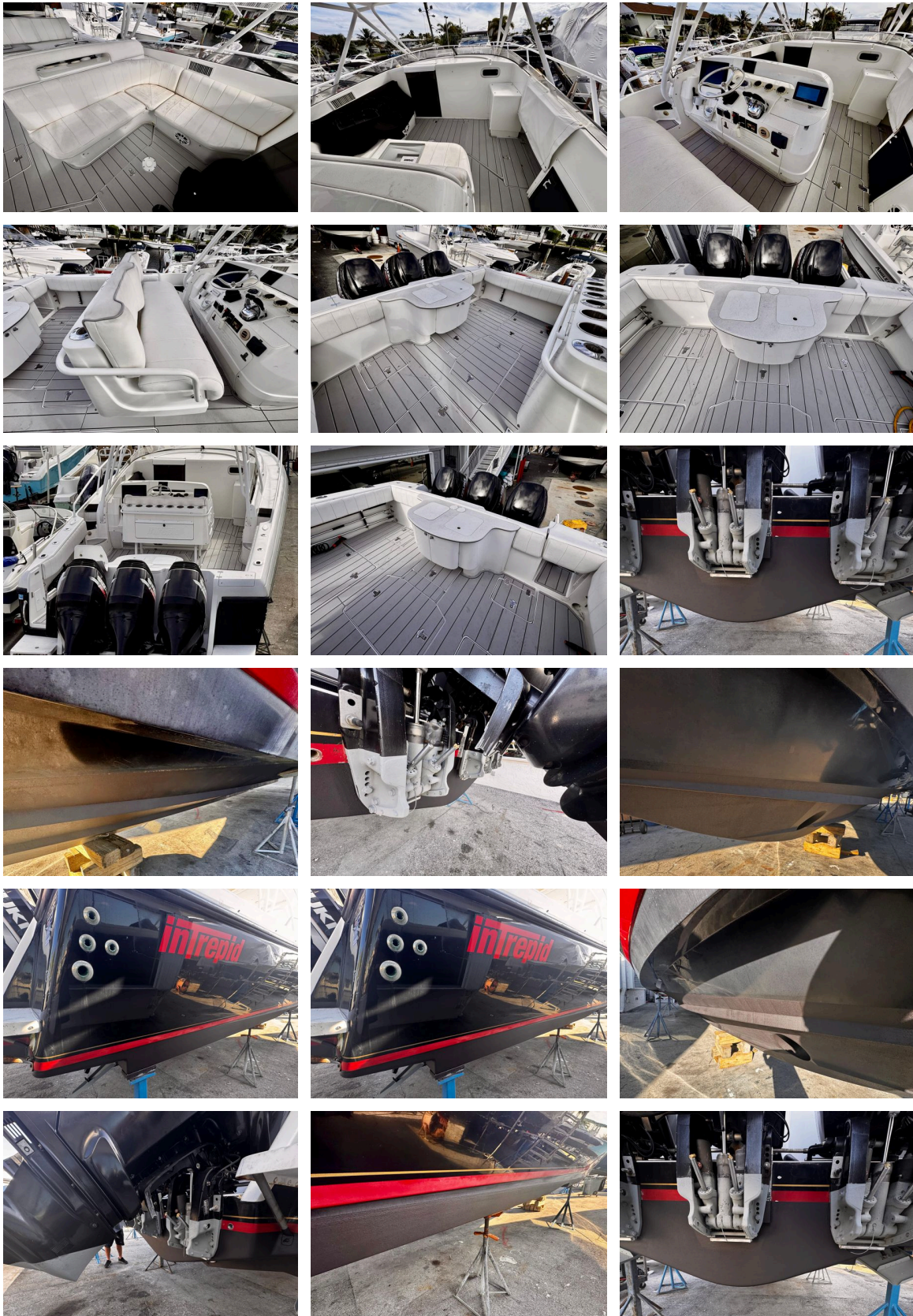




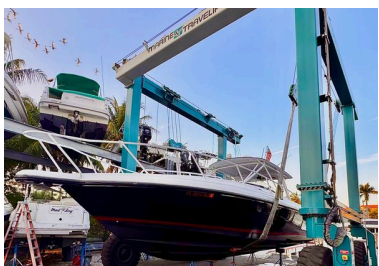
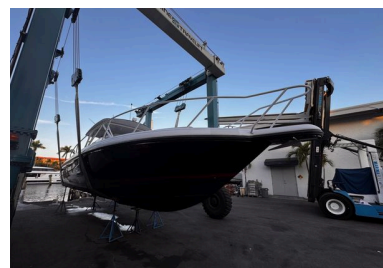
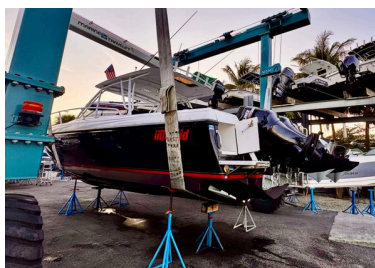
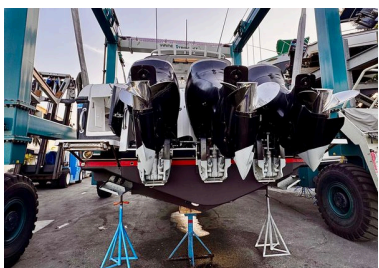
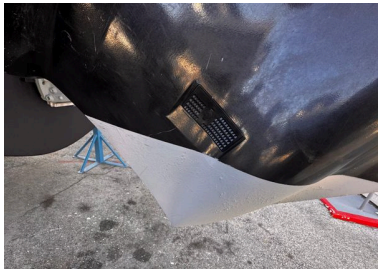












#### Disclaimer

The Company offers the details of this vessel in good faith but cannot guarantee or warrant the accuracy of this information nor warrant the condition of the vessel. A buyer should instruct his agents, or his surveyors, to investigate such details as the buyer desires validated. This vessel is offered subject to prior sale, price change, or withdrawal without notice.

Did you know at Complete Marine we are a full service marina that covers any aspect of the boating industry!

Parts, service & repairs, modifications, 50 TON LIFT, fuel dock, snack bar, dock slips, dry storage, new & used sales, consignments, new & used trailers, bottom painting and nobody beats our price/quality !!



Centrally located in Pompano Beach and quick access to the intercostal !!

Call John Kraft today or please ask for any of our highly trained sales professionals !!

***\*\*\* trailers are priced and sold separately. We have both used and new in stock and ready to go !***

© 2025 Boats Group