



COMPLETE MARINE  
COMPLETE MARINE  
Pompano Beach, FL, US, 33062  
Tel:954-567-2628



2025 Drakkar 280CC

Pompano Beach, Florida

YEAR	LENGTH	PRICE
2025	28 ft	\$199,900

2025 DRAKKAR 280 CC BOAT The 2025 Drakkar 280 CC is a center console boat designed for performance and versatility, typically used for fishing, cruising, and other recreational activities. While specific details may vary based on the model, Drakkar boats are known for their high-quality construction and modern features. Here's a general overview of what you can expect from the 2025 Drakkar 280 CC: Key Features (Based on similar models):

- Length: Around 28 feet, providing ample space for passengers, gear, and equipment.
  - Engine Options: Often equipped with twin outboard motors, offering reliable performance and excellent fuel efficiency.
  - Hull Design: A deep-V hull, ideal for handling rough waters while providing a smooth, stable ride.
  - Deck Layout: Spacious and functional, with plenty of room for fishing, lounging, and entertaining. It may include features like a leaning post, large fish boxes, and rod storage.
  - Electronics: State-of-the-art navigation and sonar systems to assist with fishing and navigation.
  - Build Quality: High-quality materials that ensure durability and long-term performance
- Design and Construction
- Hull Design: The Drakkar 280 CC features a deep-V hull that provides excellent handling, particularly in rough water conditions. It's designed to cut through waves and offer a smooth, stable ride even in choppy seas.
  - Material: The boat is typically built with high-quality composite materials for durability and lightweight performance, ensuring longevity while maintaining efficiency on the water.

Performance

- Engines: The 2025 Drakkar 280 CC likely comes with twin outboard engines. Depending on the configuration, these could be in the range of 250 to 400 horsepower each, offering impressive speed and efficiency. These engines are designed for fuel economy, which is crucial for long days on the water.
- Top Speed and Range: With twin engines, you can expect a top speed of around 45-55 mph (depending on engine choice and load). Range would be well over 300 nautical miles, especially if you're cruising at a moderate pace, ideal for day trips or even weekend excursions.

Comfort and Features

- Cockpit and Seating: The 280 CC has plenty of seating options, including a forward lounge area, a leaning post helm seat, and a spacious aft deck. It's designed for versatility—whether you're fishing, sunbathing, or socializing with friends and family.
- Storage: Ample storage space is provided, including large fish boxes, a transom livewell, and compartments for personal items. These are perfect for long fishing trips or day cruises with family.
- Entertainment: Onboard, you'll likely find Bluetooth audio systems, integrated LED lighting, and even optional coolers for drinks and snacks.

Fishing Features

- **Rod Storage:** The Drakkar 280 CC has abundant rod storage, including racks along the sides, and optional hardtop rod holders. This is ideal for serious anglers who need to keep their gear organized.
- **Livewell:** A large livewell in the transom ensures your bait stays fresh while you focus on reeling in your catch.
- **Fish Finder & Electronics:** Expect advanced electronics for navigation, depth finding, and sonar, which is particularly useful for finding fish in deeper waters.

#### Pricing (Estimated)

- **Base Price:** Typically, a boat like the 2025 Drakkar 280 CC could range from around \$190,000 to \$240,000+ depending on engine options, customization, and additional features like electronics and luxury upgrades.

#### Other Considerations

- **Warranty:** The Drakkar 280 CC might come with a manufacturer's warranty on both the hull and the engines. Typically, the engine manufacturers (like Yamaha, SUZUKI or Mercury) could offer 3-5 years of coverage with warranty extensions could be available at time of contract.

##### 1. Offshore Fishing:

If you're planning on using the Drakkar 280 CC for serious offshore fishing, this boat is a strong contender. Here's why:

- **Stability in Rough Waters:** The deep-V hull gives it a significant advantage when venturing offshore, offering a smooth ride even when the seas get a little choppy. Whether you're headed miles out to catch larger species like tuna or marlin, this hull will make sure you feel secure and comfortable.
- **Fishing Amenities:** The livewell, large fish boxes, and rod storage options make it well-suited for an extended fishing trip. Whether you're trolling, casting, or bottom fishing, the layout supports all styles.
- **Electronics for Fishing:** With a boat of this caliber, you're likely going to want top-tier fish finders and chartplotters. The 2025 Drakkar 280 CC could come equipped with systems like Garmin or Simrad, offering detailed maps, depth readings, and even sonar imaging to help locate fish.
- **Range:** With twin outboards, you've got enough fuel capacity to head far offshore without worrying about running out of fuel too soon. Plus, the boat's speed means you won't take forever to get to the best fishing spots.

##### 2. Coastal Cruising & Family Fun:

On the flip side, if you're looking for a boat to cruise with family or friends, enjoy some watersports, or simply relax on the water, the Drakkar 280 CC offers:

- **Comfortable Seating:** The forward lounge area provides a great place for sunbathing, while the helm seating is perfect for the captain. The aft deck is wide open, making it great for socializing or even setting up a few beach chairs.
- **Smooth Ride:** When you're cruising along the coast, the boat's ability to cut through the water with ease means you can focus more on relaxation than worrying about how rough the water might be.
- **Entertainment:** Bluetooth audio systems and LED lighting can make it feel like a floating party. This is perfect for enjoying an afternoon on the water or watching the sunset.
- **Storage for Gear:** Whether it's picnic supplies, beach toys, or water sports equipment, the ample storage on the boat will let you bring everything you need for a fun day out on the water.

##### 3. Performance Features for Both Uses:

No matter how you plan to use the Drakkar 280 CC, the engine options are worth noting:

- **Twin Engines:** With twin outboards in the 250-400 HP range, you've got a lot of flexibility. These engines provide solid power for both speed and fuel efficiency. On long trips, the fuel economy can really make a difference—especially when cruising at a moderate pace.
- **Fuel Capacity:** Depending on the tank size, you can expect a range of over 300 nautical miles, which gives you peace of mind on both short trips and longer offshore excursions.
- **Speed:** Top speeds of 45-55 mph will ensure you get to your destination quickly. Plus, the boat's maneuverability will make navigating tight coastal waters or shallow areas a breeze.

#### Customization Options:

When it comes to customization, Drakkar is known for giving owners flexibility. Some customization options might include:

- **Color Schemes:** You can likely choose from a variety of gel coat finishes, or even custom colors.
- **T-top or Hardtop:** A hardtop could provide extra shade, while a T-top might be more minimalist. Either way, these options help protect you from the sun.
- **Upgraded Electronics:** Depending on your needs, you could upgrade your fish finders, add radar systems, or even install autopilot for easier navigation on longer trips.

You're looking at a brand new 2025 Drakkar 28 center console powered by twin Mercury 300 hp four strokes. The boat is equipped with hard top, black out dash with a Simrad 12" GPS/sounder,full windshield with motorized powered vent, aquarium livewell w/ blue light feature, rear aft folding seat, cockpit flooring, huge head 6' head clearance compartment with electric head, huge bow seating area, windlass anchor and more. FINANCING AVAILABLE and WE ACCEPT ALL TRADES.

For more information,  
please call/text John Kraft  
at 516\*860\*4950

SPECIFICATIONS

Year Built	2025	Category	Power	Length Overall	28 ft
Beam	9'5 ft	Max Draft	1'10 ft	Construction	Fiberglass
Hull ID	Aii28012G425	Deadrise Angle	24 deg	Drive Type	Other
Engines	2	Total Engine Power	600 hp	Fuel Tanks	1
Fuel Tank Cap.	185 gal	Water Tanks	1	Water Tank Cap.	6 gal
Water Heater Cap.	0 gal	Holding Tanks	1	Holding Tank Cap.	55 gal
Windlass	Electric				

ENGINE 1 SPECIFICATIONS

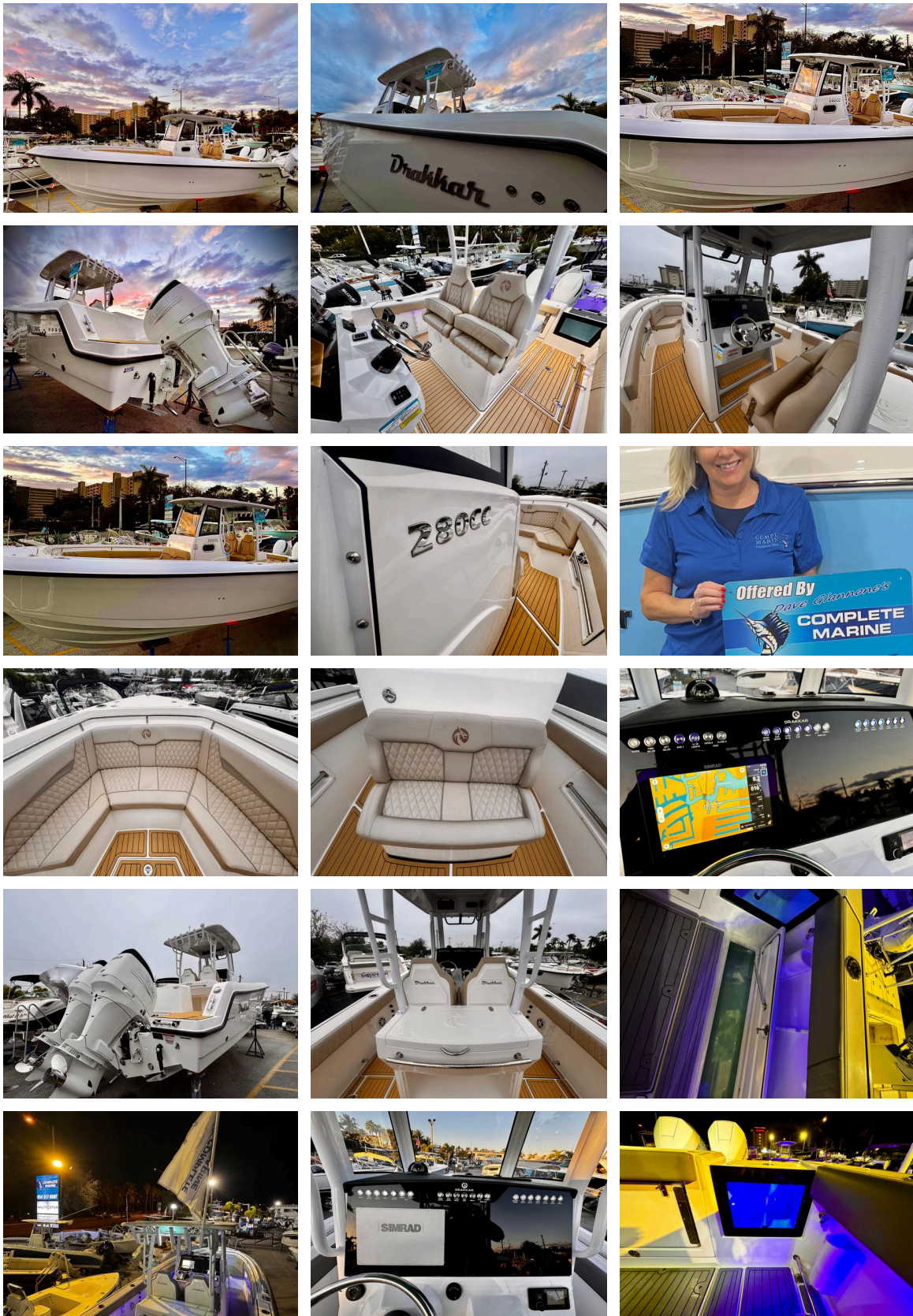
Make:	SUZUKI	Model:	DF300AP	Fuel:	Unleaded
Engine Power:	300hp	Type:	Outboard	Propeller Type:	3 BladeStainless Steel
Drive Type:	Other	Year:	2025	Engine Hours:	1

ENGINE 2 SPECIFICATIONS

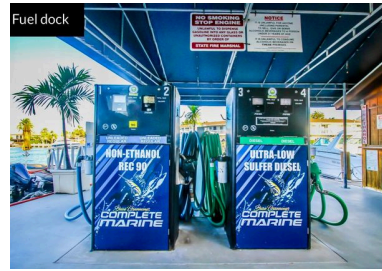
Make:	SUZUKI	Fuel:	Unleaded	Engine Power:	300hp
Type:	Outboard	Propeller Type:	3 BladeStainless Steel	Drive Type:	Other
Year:	2025	Engine Hours:	1		



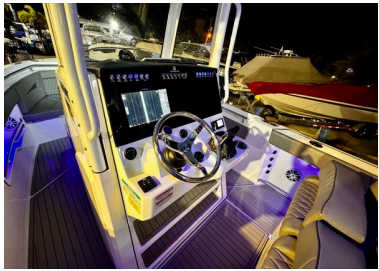
## MEDIA GALLERY



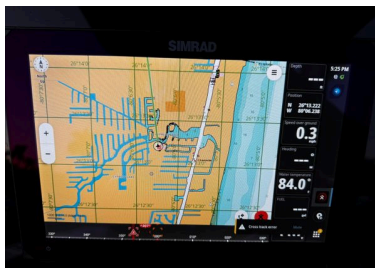




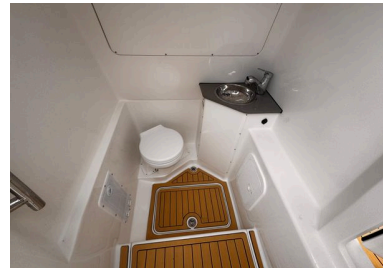




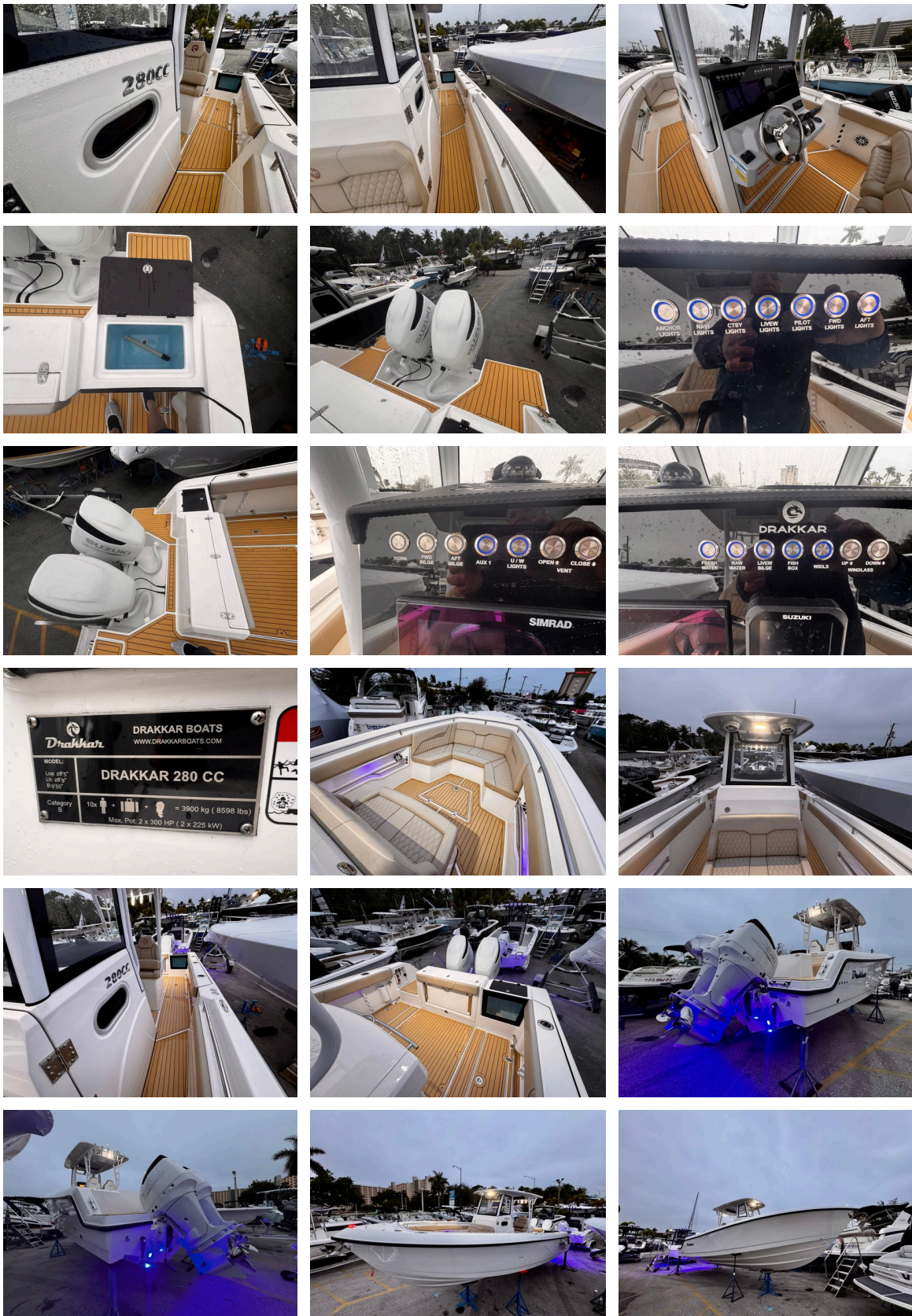




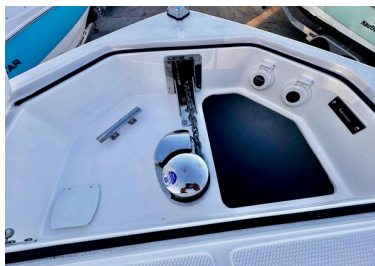




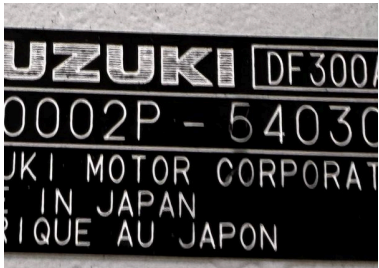












#### Disclaimer

***Did you know at Complete Marine we are a full service marina that covers any aspect of the boating industry! Parts, service & repairs, modifications, 50 TON LIFT, fuel dock, snack bar, dock slips, dry storage, new & used sales, consignments, new & used trailers, bottom painting and nobody beats our price/quality !!***

***Centrally located in Pompano Beach and quick access to the intercostal !!***

***Call John Kraft at 516\*860\*4950 today or please ask for any of our highly trained sales professionals !!***

***\*\* This boat is located at our marina in our yard. Please call/text John Kraft 516\*860\*4950 to set up a day & time to spend adequate time to spend with you.***

***\*\* trailers are available priced and sold separately. We have both used and we also custom build trailers as well. Always in stock and ready for immediate delivery.***

***\*\*\* we also ship boats not just throughout the USA but we ship worldwide as well !!***

#### Disclaimer

The Company offers the details of this vessel in good faith but cannot guarantee or warrant the accuracy of this information nor warrant the condition of the vessel. A buyer should instruct his agents, or his surveyors, to investigate such details as the buyer desires validated. This vessel is offered subject to prior sale, price change, or withdrawal without notice.

\*\*\* marina, salespeople, staff not responsible for any typos, mis-information, incorrect pictures, incorrect stats/specs. So please confirm everything. \*\*\* trailers are not included in price, they are priced and sold separately. We have both pre-owned and new trailers available.