



COMPLETE MARINE
COMPLETE MARINE
Pompano Beach, FL, US, 33062
Tel:954-567-2628



2025 Piranha B2200

Pompano Beach, Florida

YEAR	LENGTH	PRICE
2025	22 ft	\$69,900

2025 Piranha Casador B2200 just rolled off the assembly line and is here right now at our Marina !!

Powered by a Mercury 200XL, also power pole Pro2 series, Minkotta trolling motor, sea star steering, lenco trim tabs, jack plate by action series, and best of all it's equipped with a HUMMINGBIRD HELIX 10, also Mercury digital gauge w/ the Vessel View app. !!

The new Piranha Bay Series B2200 is an ultra-versatile top-tier flats skiff at just the right price. At just under 22 feet, it's the perfect size for some family fun at the sandbar or for a day of fishing with your friends. With a 55 gallon fuel tank and an economical outboard, it will take you to your secret fishing spots and to your favorite watering hole. It comes with plenty of seating and lots of storage. The Casador is the ultimate platform for fishing, family and fun. Take a ride on a Piranha today and feel the difference.

stk# 00

** this boat is located here at our marina in the sales lot & ready to go !!

*** for a quick call back please call/text John Kraft directly at 516*860*4950

Did you know at Complete Marine we are a full service marina that covers any aspect of the boating industry!

Parts, service & repairs, modifications, 50 TON LIFT, fuel dock, snack bar, dock slips, dry storage, new & used sales, consignments, new & used trailers, bottom painting and nobody beats our price/quality !!

Centrally located in Pompano Beach and quick access to the intercostal !!

Call John Kraft today or please ask for any of our highly trained sales professionals !!

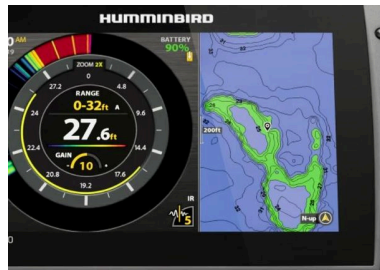
SPECIFICATIONS

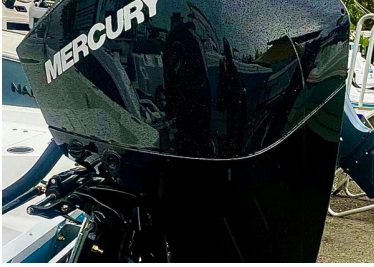
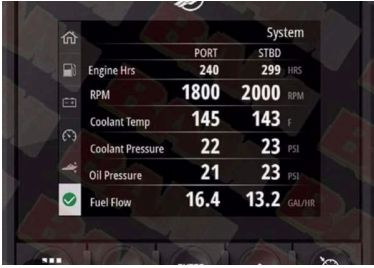
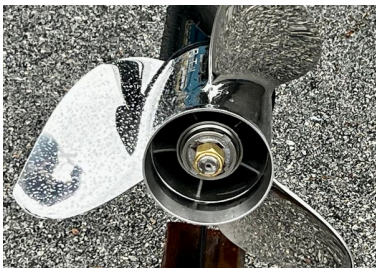
Year Built	2025	Category	Power	Length Overall	22 ft
Beam	8 ft	Construction	Fiberglass	Hull ID	CR22G055E425
Engines	1	Total Engine Power	200 hp	Fuel Tanks	1
Fuel Tank Cap.	55 gal	Water Tank Cap.	0 gal	Water Heater Cap.	0 gal
Holding Tank Cap.	0 gal				

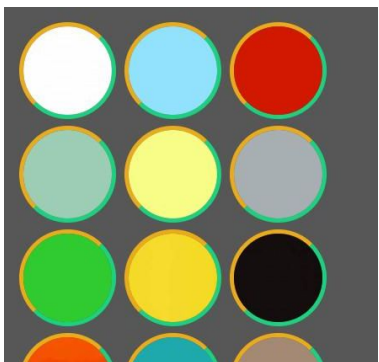
ENGINE 1 SPECIFICATIONS

Make:	MERCURY	Model:	200XL	Fuel:	Unleaded
Engine Power:	200hp	Year:	2025	Engine Hours:	0

MEDIA GALLERY

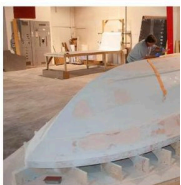






PRODUCTION PROCESS

es to provide each owner with their skiff. We use only the highest quality building techniques. Each boat is built to tight tolerances. Cure times, ambient conditions to detail all go into the process of building a boat. First, we have a discussion with you a skiff that meets your needs. The boat will be used is critical to the design. It will dictate the storage layout of the boat to meet release well requirements. We help you select the right motors, insulated coolers, rod holders, and other forms to give you the perfect vessel.



ies to provide each owner with their skiff. We use only the highest quality building techniques. Each boat is built to tight tolerances. Cure times, ambient conditions to detail all go into the process of building a boat. First, we have a discussion with you about what you need. Then we build the skiff that meets your needs. The boat will be used is critical to the way it will dictate the storage layout of the boat. We release well requirements. We help you select the right motors, insulated coolers, rod holders, and more to give you the perfect vessel.



<u>Specifications</u>	<u>Standard Features</u>	<u>Optional Features</u>
Length: 21' 0"	Pop Up Stainless Steel Cleats	GPS Fish Finders
Drafter: 15"	Self Bailing Cockpit	Shallow Water Anchors
Alt: 112"	2 - 1100 GPH Bilge Pumps	Stereo Systems
Beam: 8"	850 GPH Aerated Bait Well Pump	T Tops
Depth: 25"	Rob Net Navigation Lights	Trolling motors
Max HP: 55	Control Console w/Cooler Seat	Consoles
	Room for Flush Mount Electronics	Many Colors Available
	Rear Jump Seats	

<u>Specifications</u>	<u>Standard Features</u>	<u>Optional Features</u>
Length: 21' 9"	Pop Up Stainless Steel Cleats	GPS Fish Finders
Width: 15'	Self Bailing Cockpit	Shallow Water Anchors
Height: 12"	2 - 1100 GPH Bilge Pumps	Stereo Systems
Beam: 8'	850 GPH Aerated Bail Well Pump	T Tops
Max. Weight: 15 gal	Roll Back Navigation Lights	Trolling motors
HP: 200	Center Console w/Cooler Seat	Consoles
	Rear for Flush Mount Electronics	Many Colors Available
	Rear Jump Seats	

PRODUCTION PROCESS

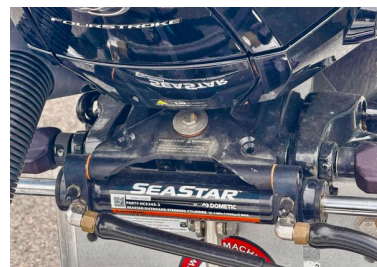
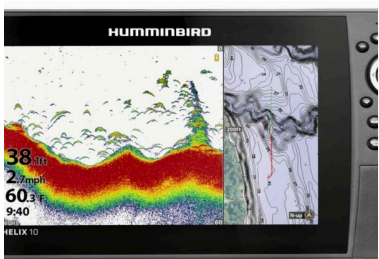
A person is working on a boat hull in a workshop. They are using a ladder to reach the hull, which is supported by a stand. Various tools and materials are visible on the workbench in the foreground.

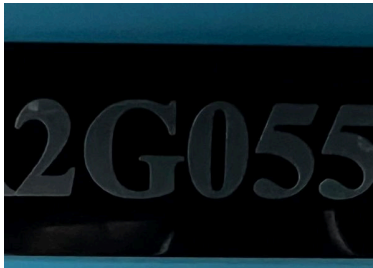
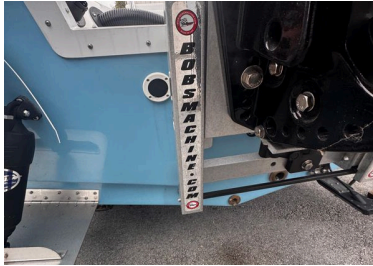
Once these decisions are made, the b... The molds are waxed and polished wh... ensure proper separation. Next, your c... applied to the mold. The approximate... millimeters is then allowed to cure b... fiberglass mat and high quality spec i... is applied. This process continues wit... woven fiberglass. The fiberglass mat i... the resin. The lamination schedule is f... with consideration given to ambient t... manufacturer-dictated cure times. Thi... each cap, liner, console, and hatch th... Once all of the components are comp... assembly begins.

he stringer system for added
stringer system is attached to the
old. This controls any unnecessary
stringer support is adhered to the
al, plumbing, and power systems
components. All of the stainless
ire pieces are attached to the hull,
c. Once all the pieces are in place
er and chemically bonded to one
piece. Piranha's quality system
ts or exceeds all standards of
inspect our skiffs after each critical
cess. Our build process is
stantly upgraded to guarantee
from Piranha meets your high



he stringer system for added
tringer system is attached to the
old. This controls any unnecessary
stringer support is adhered to the
al, plumbing, and power systems
components. All of the stainless
ire pieces are attached to the hull,
c. Once all the pieces are in place
er and chemically bonded to one
piece. Piranha's quality system
ts or exceeds all standards of
inspect our skiffs after each critical
cess. Our build process is
instantly upgraded to guarantee
from Piranha meets your high





John Kraft
Sales Associate

516-860-4950
4-784-1116
completeboatfl.com

800 S Federal
Pompano Beach, FL
Office 954-567-BOAT

www.completeboat.com

CONTACT INFORMATION

Did you know at Complete Marine we are a full service marina that covers any aspect of the boating industry!

Parts, service & repairs, modifications, 50 TON LIFT, fuel dock, snack bar, dock slips, dry storage, new & used sales, consignments, new & used trailers, bottom painting and nobody beats our price/quality !!

Centrally located in Pompano Beach and quick access to the intercostal !!

Call John Kraft today or please ask for any of our highly trained sales professionals !!

FOR A QUICK RESPONSE CALL/TEXT - Text is best !!

John Kraft directly at 516-860-4950

Licensed Broker

IF YOUR **LOOKING TO SELL OR TRADE YOUR BOAT** CALL US TODAY !

WE ACCEPT ALL TRADES AND WE BUY BOATS ! WE OFFER FINANCING AND SHIPPING

Complete Marine located in Pompano Beach FL is a full service waterfront facility offering New and Preowned boats, brokerage, service, storage, fuel, financing and insurance. "If we don't have it in stock, We will find it." Our service department is staffed with certified technicians and we have a 50 ton travel lift, forklifts and offering dockside service makes no job to big or to small. We specialize in all areas of service from diesel, gas engines to AC-Refrigeration. "From bottoms to repower. We do it all"

Disclaimer

The Company offers the details of this vessel in good faith but cannot guarantee or warrant the accuracy of this information nor warrant the condition of the vessel. A buyer should instruct his agents, or his surveyors, to investigate such details as the buyer desires validated. This vessel is offered subject to prior sale, price change, or withdrawal without notice.