



COMPLETE MARINE
COMPLETE MARINE
Pompano Beach, FL, US, 33062
Tel:954-567-2628



2025 Sea Pro 202 Center Console

Pompano Beach, Florida

| YEAR | LENGTH |
|------|--------|
| 2025 | 20 ft |

2025 Sea Pro 202 CC, Powered by a Suzuki DF150.

The 2025 Sea Pro 202 Center Console is a popular choice for anglers and boating enthusiasts who seek a versatile and high-performing vessel. Here's an overview of its features and specifications:

Key Features:

1. Hull Design:

- Offers a smooth and dry ride, thanks to Sea Pro's advanced hull construction and design.
- Built with composite materials for durability and reduced maintenance.

2. Center Console Layout:

- Provides 360-degree fishing access.
- Ergonomic helm with easy-to-reach controls and room for advanced electronics.

3. Standard Equipment:

- Stainless steel hardware for corrosion resistance.
- Comfortable seating, including a leaning post and optional bow cushions.
- Built-in rod holders, cup holders, and storage compartments for gear.

4. Fishing Features:

- Aerated live well for bait storage.
- Insulated fish boxes for your catch.
- Optional T-top with rocket launchers for rod storage and sun protection.

5. Performance:

- Typically equipped with a single outboard engine, with horsepower options 115, 150 or 200 HP, providing excellent speed and fuel efficiency.

6. Technology:

- Digital switching systems and compatibility with advanced navigation tools.
- Optional premium audio systems for entertainment.

Specifications (Estimated for 2025 Model):

- Length: 20’ 2” (approx. 6.1 meters)
- Beam: 8’ 4” (approx. 2.54 meters)
- Draft: ~13 inches (approx. 0.33 meters)
- Fuel Capacity: ~60 gallons (227 liters)
- Weight: ~2,800 lbs (1,270 kg)

Popular Uses:

- Inshore and offshore fishing.
- Family outings and water sports.
- Coastal cruising and exploring.

If you’re considering this boat, check for customizable options like upgraded electronics, premium finishes, and additional seating. For pricing and availability, it’s best to contact John Kraft a certified Sea Pro dealer or explore online listings.

***this boat is located at our marina in our yard

M 70.5 P 42.5

SPECIFICATIONS

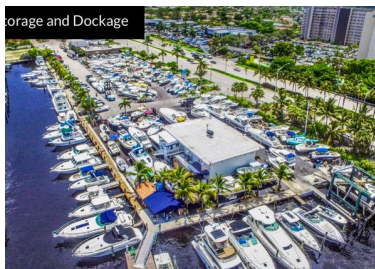
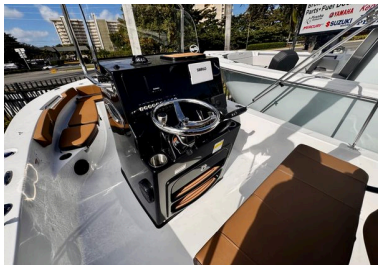
| | | | | | |
|--------------------|--------|-------------------|------------|-----------------|--------------|
| Year Built | 2025 | Category | Power | Length Overall | 20 ft |
| Beam | 8'3 ft | Construction | Fiberglass | Hull ID | SPBHW308K425 |
| Deadrise Angle | 16 deg | Min Draft | 1'1 ft | Engines | 1 |
| Total Engine Power | 150 hp | Fuel Tank Cap. | 60 gal | Water Tank Cap. | 0 gal |
| Water Heater Cap. | 0 gal | Holding Tank Cap. | 0 gal | | |

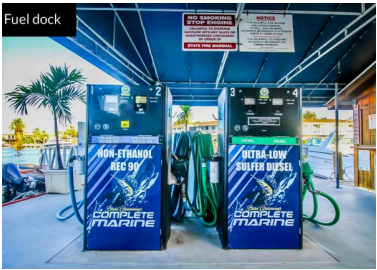
ENGINE 1 SPECIFICATIONS

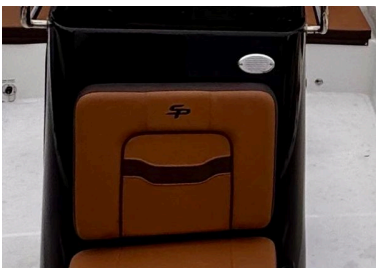
| | | | | | |
|---------------|--------|--------|----------|-------|----------|
| Make: | Suzuki | Model: | DF150A | Fuel: | Unleaded |
| Engine Power: | 150hp | Type: | Outboard | Year: | 2025 |
| Engine Hours: | 1 | | | | |

MEDIA GALLERY

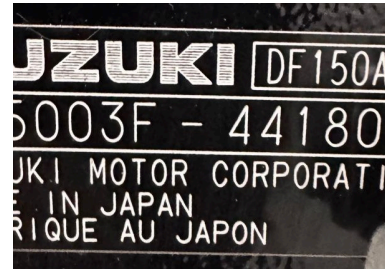












Disclaimer

The Company offers the details of this vessel in good faith but cannot guarantee or warrant the accuracy of this information nor warrant the condition of the vessel. A buyer should instruct his agents, or his surveyors, to investigate such details as the buyer desires validated. This vessel is offered subject to prior sale, price change, or withdrawal without notice.

Did you know at Complete Marine we are a full service marina that covers any aspect of the boating industry!

Parts, service & repairs, modifications, 50 TON LIFT, fuel dock, snack bar, dock slips, dry storage, new & used sales, consignments, new & used trailers, bottom painting and nobody beats our price/quality !!

Centrally located in Pompano Beach and quick access to the intercostal !!

Call John Kraft today or please ask for any of our highly trained sales professionals !!

© 2025 Boats Group