



Plantation Boat Mart
90400 Overseas Hwy
Tavernier, FL, US, 33070
Tel:305-852-5424



2017 Formula 382 FASTech

📍 League City, Texas

YEAR	LENGTH	PRICE
2017	38 ft	\$370,000

2017 Formula 382 Fastech AVAILABLE NOW! COMES WITH MYCO TRAILER!

This Formula 382 is powered by twin Mercury Racing 700 SCI's with only 225 hours. This 382 Fastech has been maintained to the highest standards since new and is in excellent condition.

Additional features of this Formula 382 Fastech include:

2019 Myco Trailer Aluminum & Painted

M8 Racing Drives

Premium Upgraded JL Audio Sound System

Raymarine ES78 Chart Plotter

SeaDek in the Cockpit, Bow, Swim Platform, and Cavitation Plates on the Drives

Port dash locker w/vanity mirror & dual USB charging ports

Built-in trash receptacle

Two auxiliary 12V outlets

Blue/white LED courtesy lighting

Custom electric-assist offshore-style bolsters

Custom electric-assist footrest

Aft lounge seating for four w/storage beneath

Trunk w/shorepower hookupcord storage, and shower

Integrated swim platform w/concealed stainless swim ladder

Side coaming storage

Ritchie® 5" offshore compass

All-weather cockpit cover

Bimini top with full enclosure

Tinted, tempered curved-glass windshield w/polished stainless frame

Charcoal woodgrain-finish flooring throughout cabin

Removable Corian® cocktail table in Cabin w/four polished drink holders

Remote-control multi-color LED accent lighting

Cabin Entertainment Center w/ polished stainless sink, Corian countertop, demand water system, 120V/12V refrigerator & concealed trash receptacle

Wrap-around lounge seating/double berth w/filler cushions

19" Flat Screen TV

Four Bomar® cabin venting hatches

2 Shipping Covers

3 Optima Batteries

Polished stainless 120V shore power w/fail-safe galvanic isolator & 30-amp cord, cable TV, telephone inlets

Sirius Satellite Radio

VHF Radio

Underwater Lights

Upgraded Mercury Racing Trim Tabs

2 Sets of Mercury Racing Six-Blade Props w/Mercury Racing Boxes (4)

Generator 36hrs

AC

Pump Out Toilet

Too many options to list! For more information, call 1-800-KEY-BOAT.

SPECIFICATIONS

Year Built	2017	Category	Power	Length Overall	38'2 ft
Beam	8'3 ft	Max Draft	2'9 ft	Cabin Headroom	5'1 ft
Construction	Fiberglass	Hull ID	TNRD9757C617	Deadrise Angle	24 deg
Drive Type	Stern	Engines	2	Total Engine Power	1,400 hp
Fuel Tank Cap.	195 gal	Water Tank Cap.	19 gal	Water Heater Cap.	0 gal
Holding Tank Cap.	3 gal	Bridge Clearance	5'6 ft		

ENGINE 1 SPECIFICATIONS

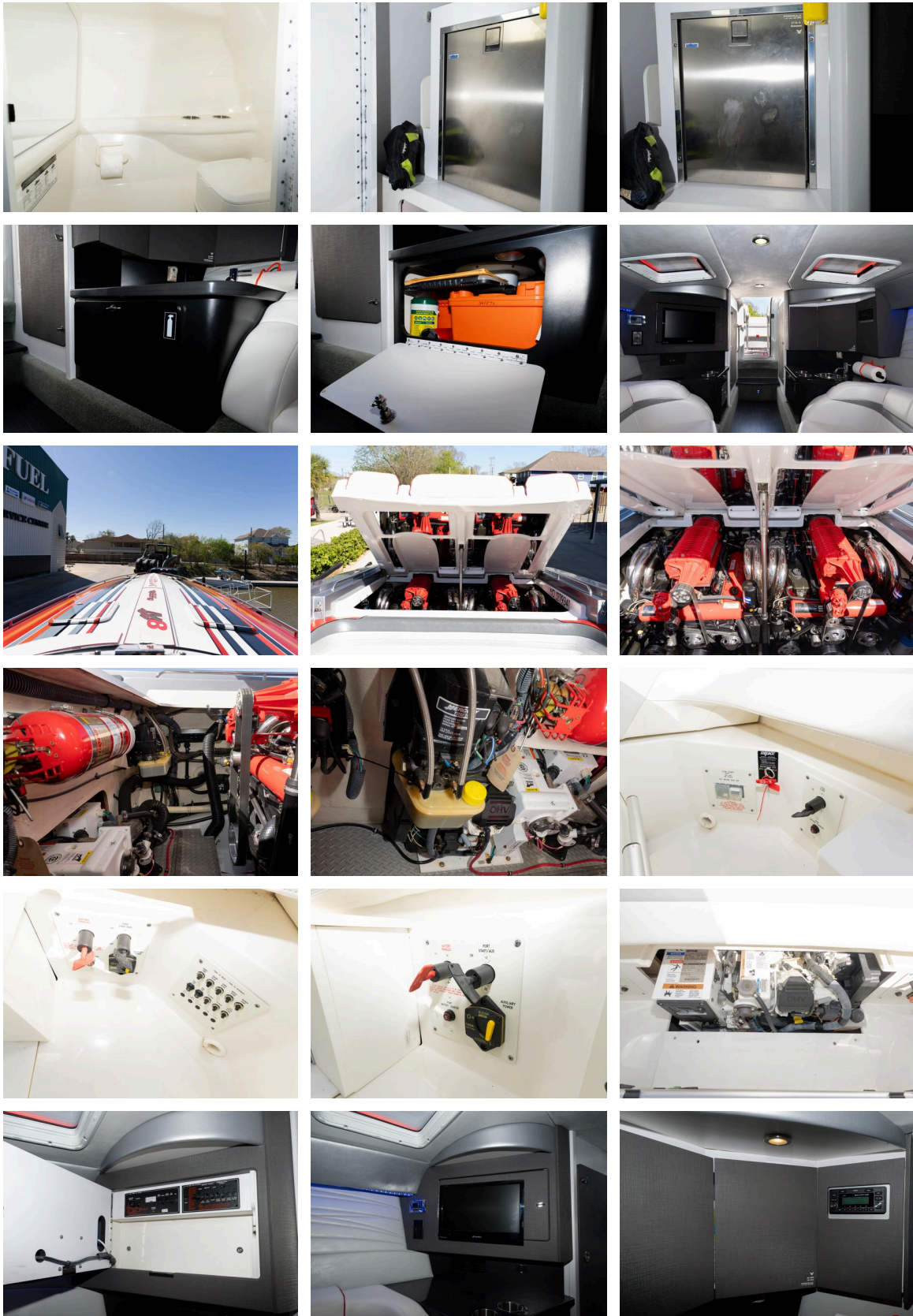
Make:	Mercury Racing	Model:	700 SCi	Fuel:	Unleaded
Engine Power:	700hp	Type:	Inboard	Propeller Type:	6 Blade
Drive Type:	Stern	Engine Hours:	225		

ENGINE 2 SPECIFICATIONS

Make:	Mercury Racing	Model:	700 SCi	Fuel:	Unleaded
Engine Power:	700hp	Type:	Inboard	Propeller Type:	6 Blade
Drive Type:	Stern	Engine Hours:	225		

MEDIA GALLERY





© 2025 Boats Group