

Charleston Boat Mart
415 W Coleman Blvd
Charleston, SC, US, 33070
Tel:803-513-5168



2025 Blackwater 43 Sportfish

Mount Pleasant, South Carolina

YEAR	LENGTH
2025	43 ft

2025 Blackwater 43 Sportfish In Stock!

Key features of this 43' Blackwater include:

Quadruple Mercury Verado 400 V10

Triple Garmin Displays – (2) 19" and (1) 12"

Joystick w/ Autopilot

1KW Transducer

GSD 24 Sonar

Open Array Radar

ShadowCaster Lights

RAM Cell Phone Charger

Dual Lumitech Light Bar

Sionyx Night Vision Camera

Gemlux Outriggers

AC w/ Inverter

SeaKeeper 3

Windlass

Anchor Locker Wash Down

Bow Thruster

(3) LED UW Lights

JL White Grills

Dive Door w/ Ladder

Sink in Summer Kitchen

White Rub Rail

Cutting Boards

Fridge w/ Tackle Storage and One Yeti Cooler

(4) Electric Reel Outlets

(4) Fender Clips

Drop Down Rod Rack on Hard Top Black

CALL NOW FOR MORE INFORMATION!

ABOUT PLANTATION BOAT MART:

We're not just a boat dealership—we are a way of life. Our customers return year after year, purchase after purchase, because we make it a point to enjoy our lives with the products we purchase. Below are just a few more reasons, other than the Top Ten Reasons, to be a part of the Plantation Boat Mart family!

We're proud to have achieved the National Marine Manufacturers Association's 5-Star Certified Dealership status. This classification puts us in an elite class of dealers across the nation that have passed all testing in the areas of Service, Sales, Employee and Customer Programs, and General Dealership Work Ethics.

Plantation Boat Mart offers exceptional service! What does exceptional service mean? It means that we only service our customers' boats. This ensures focused service for our valued customers and gives our master certified technicians the opportunity to know our customers' boats inside and out. The result? Peace-of-mind that your boat is in good hands and will be completed in a timely manner! And... completed right the first time.

Plantation Boat Mart's parts department continues to grow and is now one of the most complete parts departments in South Florida with over 40,000 square feet of under-roof service and a large parts inventory. In other words, when you need service or a part... we've got you covered!

We are a dedicated team of trained professionals with the single goal of making you a customer for life! Welcome to the Plantation Boat Mart Family.

SPECIFICATIONS

Year Built	2025	Category	Power	Length Overall	43 ft
Beam	11'11 ft	Construction	Fiberglass	Hull ID	Blk000000025
Engines	4	Total Engine Power	1,600 hp	Fuel Tank Cap.	0 gal
Water Tank Cap.	0 gal	Water Heater Cap.	0 gal	Holding Tank Cap.	0 gal

ENGINE 1 SPECIFICATIONS

Make:	Mercury	Model:	Verado 400 V10	Fuel:	Unleaded
Engine Power:	400hp	Type:	Outboard	Year:	2025

ENGINE 2 SPECIFICATIONS

Make:	Mercury	Model:	Verado 400 V10	Fuel:	Unleaded
Engine Power:	400hp	Type:	Outboard	Year:	2025

ENGINE 3 SPECIFICATIONS

Make:	Mercury	Model:	Verado 400 V10	Fuel:	Unleaded
Engine Power:	400hp	Type:	Outboard	Year:	2025

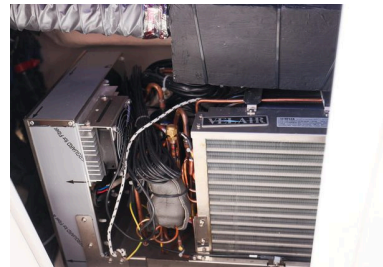
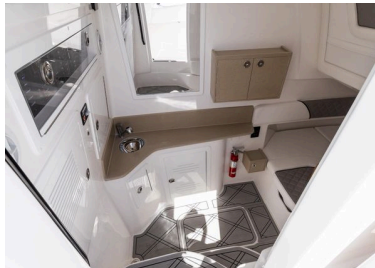
ENGINE 4 SPECIFICATIONS

Make:	Mercury	Model:	Verado 400 V10	Fuel:	Unleaded
Engine Power:	400hp	Type:	Outboard	Year:	2025

MEDIA GALLERY







**Steering System**

Joystick Control

Disclaimer

The Company offers the details of this vessel in good faith but cannot guarantee or warrant the accuracy of this information nor warrant the condition of the vessel. A buyer should instruct his agents, or his surveyors, to investigate such details as the buyer desires validated. This vessel is offered subject to prior sale, price change, or withdrawal without notice.

© 2025 Boats Group